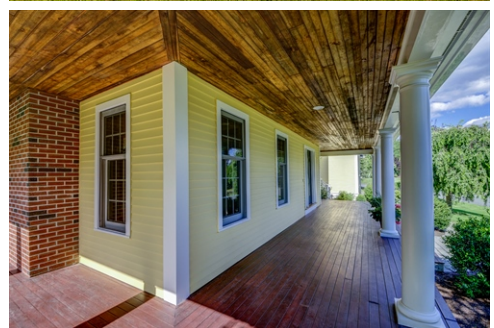




\$ 2,199,000



11 Davis Brook Drive, South Natick, MA 01760

- » Beds: 5 | Baths: 4 Full, 1 Half
- » Single Family
- » More Info: [11DavisBrookDrive.com](http://11DavisBrookDrive.com)



Nora Lynch Smith  
 (508) 245-2626  
[noralynchsmith@mac.com](mailto:noralynchsmith@mac.com)  
<http://www.NoraLynchSmithrealtor.com>



Landmark Residential Advisors Living  
 5 Washington Street  
 Sherborn, MA 01770  
 (508) 245-2626

Not to be missed gracious South Natick Farmhouse Colonial with wraparound porch in Farm Hill Village is wonderful for both formal and casual living. Home has been meticulously maintained & expanded from original design with the extension of kitchen dining area and primary's dressing room. Open chef's kitchen with granite counters, stainless appliances, hexagonal dining area and light-filled breakfast nook that opens to family room with coffered ceilings with door leading to bluestone patio, stone walls & outside fireplace. First floor office with cherry built-ins & pass through wet-bar area to formal living room w/custom fireplace. French doors and transom windows lead back to foyer & dining room. There are 5 generous bedrooms on second floor. Primary suite includes a dressing/sitting room added in renovation w/custom closets. 4 add'l bedrooms are serviced by 2 tiled baths & reading or sitting area. Lower level has direct access to garage, pristine storage areas, plus 3 separate bonus rooms and a full bath. All of this in a cul de sac neighborhood, close proximity to South Natick Village and great commuting location.

Please Note: Some photos on website are from previous listing period.

